

ESM5

Solar-Battery-Maintainer System



Deutronic Charging Technology
for extending the lifetime of the battery

The ESM5 is a solar module with an integrated charge controller for maintaining 12VDC rechargeable batteries.

Long lifetimes after production and transport as well as increasing standby-power consumption of new cars often lead to a discharge of the vehicle battery.

The ESM5 Solar-Battery-Maintainer-System prevents a deep discharge of the battery causing a massive increase of the battery lifetime. The current state of charge of the battery is indicated on the front side of the ESM5 at any time via LEDs.

Power



MORE

DEUTRONIC 
EDWANZ group

ESM5

Solar-Battery-Maintainer System

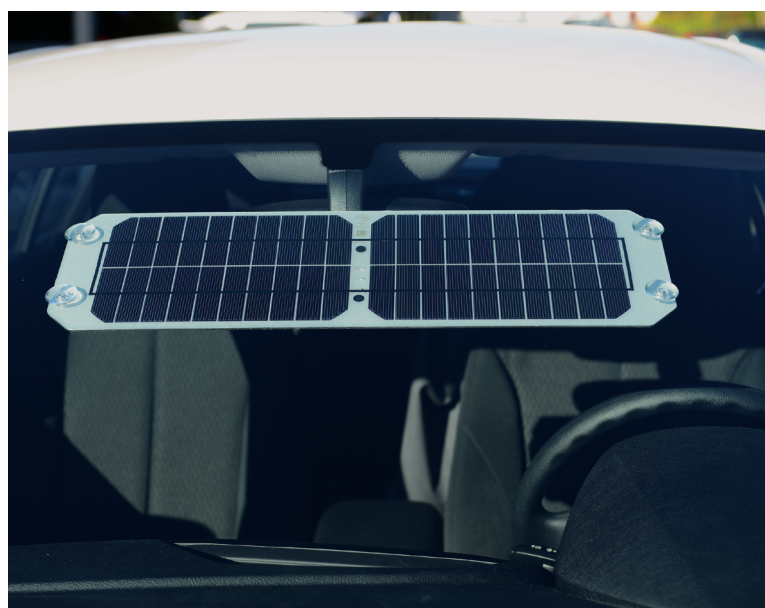


Advantages

- ✓ Solar module with integrated charge controller for 12VDC Lead/AGM/Lithium/gel based rechargeable batteries
- ✓ Processor controlled charging
- ✓ Robust solar module
- ✓ Aluminium / plastic sandwich carrier plate
- ✓ Only 5 mm thick (without charge controller)
- ✓ Status signalling via LEDs
- ✓ Charging via OBD-connector or charging clamps
- ✓ Easy installation in the car interior
- ✓ Extends the lifetime of the battery
- ✓ Preservation of battery quality, thus avoiding complaints due to defective or too weak vehicle batteries

Technical data

Type	Output voltage	Max. output current
ESM5	14,2VDC	max. 600mA



07/2025



Deutronicstraße 5 | D-84166 Adlkofen/Germany | Tel. +49 8707 920-0
E-Mail: sales@deutronic.com | www.deutronic.com

