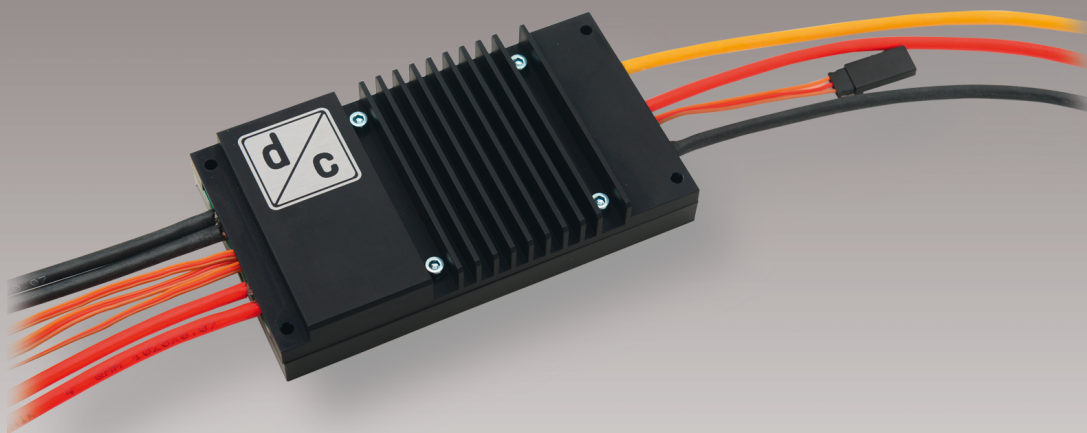


# D-SINUS motor controller

Sinus-commutated speed controller



## + More

Innovative motor controller

The innovative motor regulation in the Deutronic® D-SINUS Series is based on state of the art, sinus-commutated speed controller technology.

Compared with the competition the extremely complex control algorithm of the D-SINUS controller enables operation without the need for additional, elaborate sensors.

Therefore a higher degree of synchronisation can be achieved by field-oriented-controlled phase currents. Due to the sinusoidal current characteristic the efficiency is increased and the torque generated is constant in contrast to block commutation.

## Power



**DEUTRONIC**   
EDWANZ group

# D-SINUS motor controller

## Sinus-commutated speed controller



### Advantages

- ✓ Sensorless, sinusoidal commutated motor controller for a soft, steady and quiet running motor
- ✓ No torque ripple, high level synchronisation and high starting torque
- ✓ Up to 95 % efficiency (Controller + Motor)
- ✓ Low package space
- ✓ Different interfaces:  
CAN (D-SINUS 180 and 350), Uart, ext. temperature sensors, position sensing (Hall-sensors/Quadrature encoder)
- ✓ Telemetry
- ✓ Recuperation (current limited) for controlled battery charging
- ✓ Highest efficiency

### Technical data

Type	Input voltage	Max. Output current
D-Sinus 120	16–52VDC	120A
D-Sinus 180	16–52VDC	180A
D-Sinus 350	22–58VDC	350A
D-MIC	3,3–8,0VDC	



Deutronicstraße 5 | D-84166 Adlkofen/Germany | Tel. +49 8707 920-0  
E-Mail: [sales@deutronic.com](mailto:sales@deutronic.com) | [www.deutronic.com](http://www.deutronic.com)

