



# D-IBM2900 energy buffer system for DBL battery charger

Production times or production cycles are constantly being optimized. Our 3-phase energy buffer has been specially designed for use in production areas without central power supply, e.g. developed for line changes to ensure a seamless supply for the vehicle.

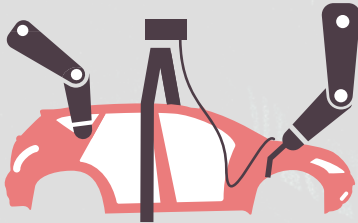
Option: Our energy storage system as a mobile type on a transportation system represents a flexible and independent possibility of vehicle loading.

## Customer benefits

- ✓ Vehicle diagnosis during implementation to the next line
- ✓ Smooth supply transition from the power supply of the production line to D-IBM2900 energy buffer system
- ✓ Shorter vehicle- and production times
- ✓ Mobile charging unit enables a supply in vehicle fleets or rework stations



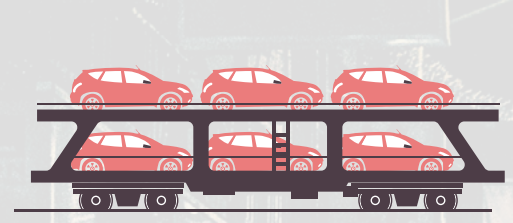
# Energy buffer system for DBL battery charger



Vehicle production



Final vehicle assembly



Transportation and storage

## Key Features

- Independent power supply of the charger (3AC DBL XXX/3W)
- Easy and safe change of the modules
- Independent battery system with internal battery management system and emergency stop
- Safe using through single cell voltage monitoring (BMS)
- 2 redundant safety shutdown's
- LED-display for visual representation of remaining energy
- Robust and secure plug connection

## Technical specifications

Input voltage range	3 x 198–264VAC +/-10 %
Output voltage range	410–540 VDC
Rated output voltage	460 VDC
Capacity output	1336 kWh, 2900mAh
Power	2500 W
Output current	1A permanent
Supply time	at 100 A at least 30 minutes
Operating temperature	0–45°C
Dimensions	380 x 550 x 160 mm (WxDxH)



Deutronicstraße 5 | D-84166 Adlkofen/Germany  
Tel.: +49 (0)8707 920-0 | Fax +49 (0)8707 1004  
E-Mail: [sales@deutronic.com](mailto:sales@deutronic.com) | [www.deutronic.com](http://www.deutronic.com)