

v1. 41. 251

Deutronic /

MPC4 -14VDC

12VDC /



1.	3
2.	4
3.	8
3.1	8
3.2	8
3.3	8
3.3.1	8
3.3.2	8
3.3.3	8
3.3.4	9
4.	9
5.	10
6.	12
6.1	12
6.2	13
6.3	13
6.4	14
6.5	14
6.5.1	15
6.5.2	15
6.5.3 SUPPLY-MENU	16
6.5.4 CHARGE MENU	17
6.5.5 CHARGE MENU / Features.....	19
6.5.6 DEVICE MENU.....	20
7.	/ /	24
8.	-	26
9.	/LED	27
10.	28
11.	29
12.	/	29
13.	29
14.	30

2.

1.

2.

3.

4.

5.

a)

b)

c)

6.

7.

8.

9.

10.

a)

b)

11.

a)

b)

c)

d)

10

e)

f)

g)

h)

i)

12.

a)

b)

c)

d)

e)

f)

13.

a)

b)

c)

d)

e)

14.

a)

b) 15 e f 16 b (d)

15.

- a)
- b)
- c) POS/P/+ NEG/N/-
- d) 15
- (e) 15(f)
- e) ()
- f) ()
- g) " "
- h)

16.

- a) POS/P/+ NEG/N/-
- b) 60cm AVG6 NEG/N/-
- c)
- d) ()
- e)
- f)
- g)

17.

120V

120V

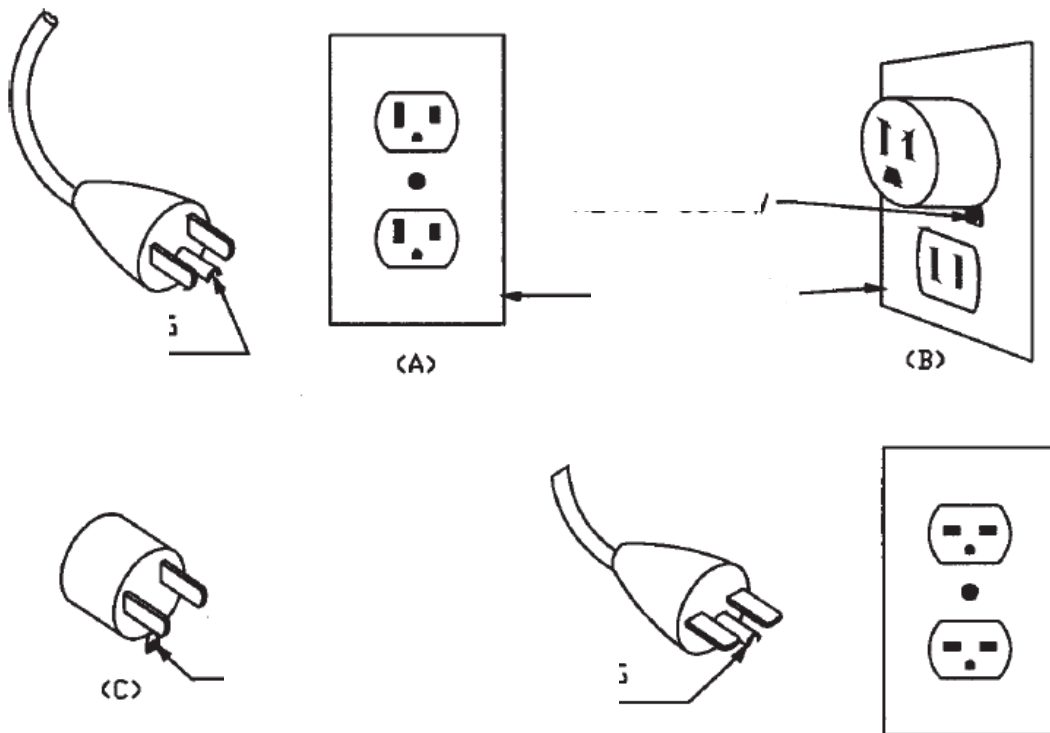
B C

A

B

230V

120V



UL1236

3.

3.1

DBLMPC4

3.2



CD

www.deutronic.com

Deutronic

3.3

3.3.1

3.3.2

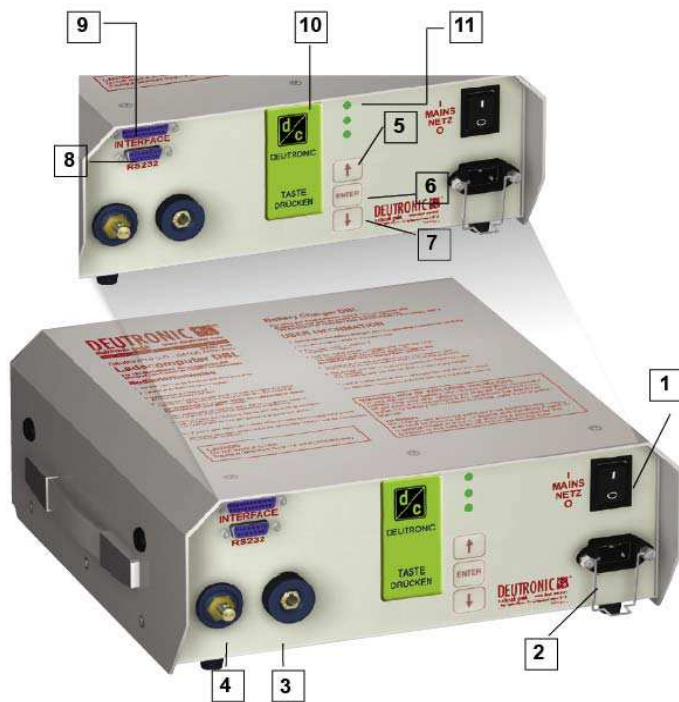


3.3.3

3.3.4

-
-

4.

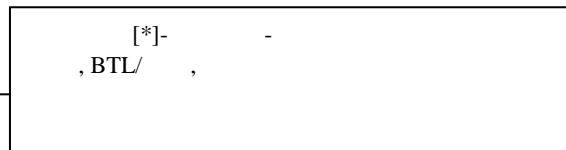


1		
2		
3	" + "	
4	" - "	
5	UP	↑
6	/	
7	DOWN	↓
8	9	
9	25	
10	/	
11	LED1 - 3	9

5.

- /
-
- Kabel .
- 1 3

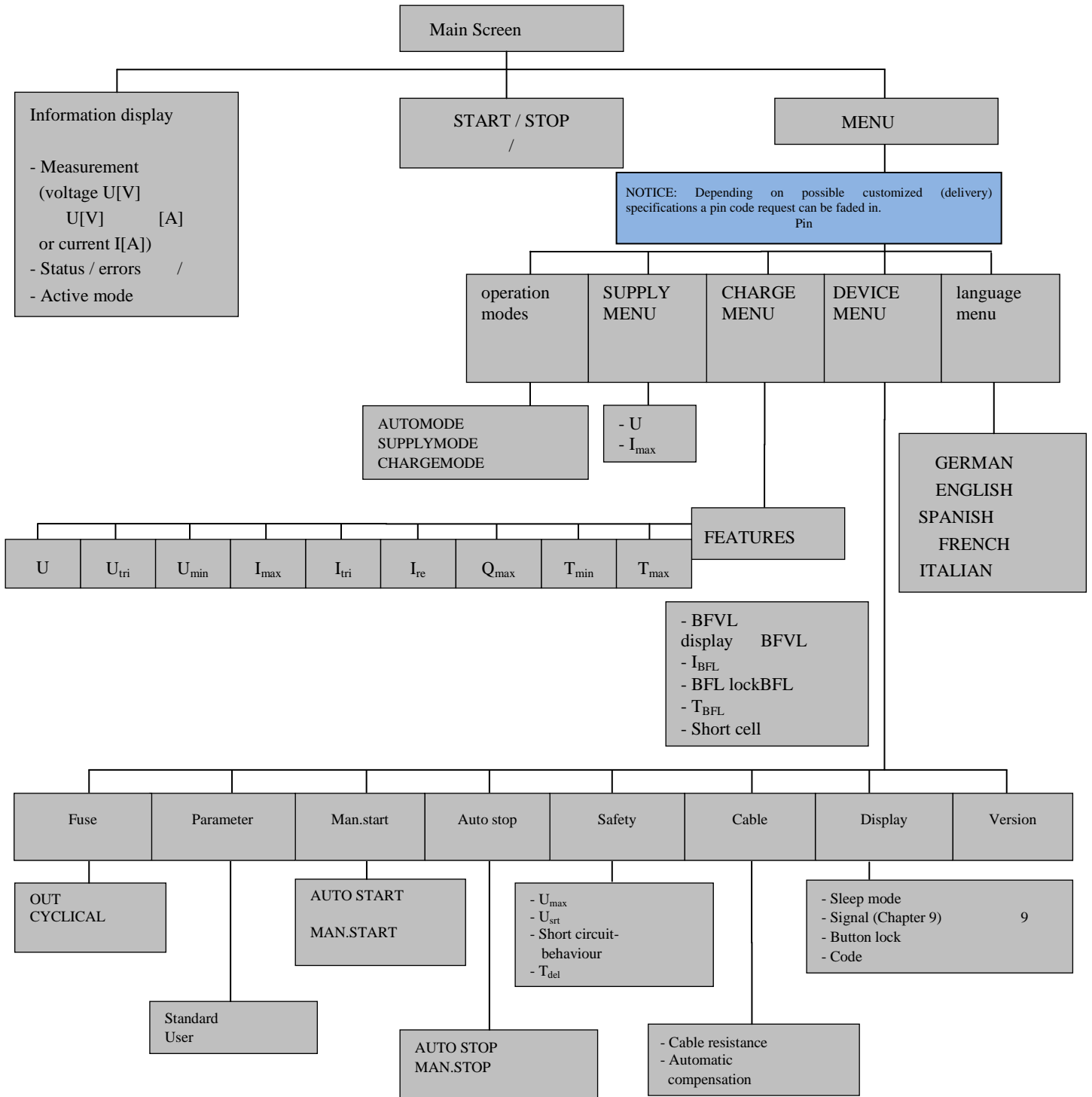
- a) ENTER ENTER 30
- b) UP UP



1-

- 6. 3
- Up/Down
- " START"
- LED1- 3 9
- " STOP"
-
- LED1- 3 www deutroni c. com
- 3 25 PLC
- Deutroni c
- Deutroni c

6.
6.1



6.2

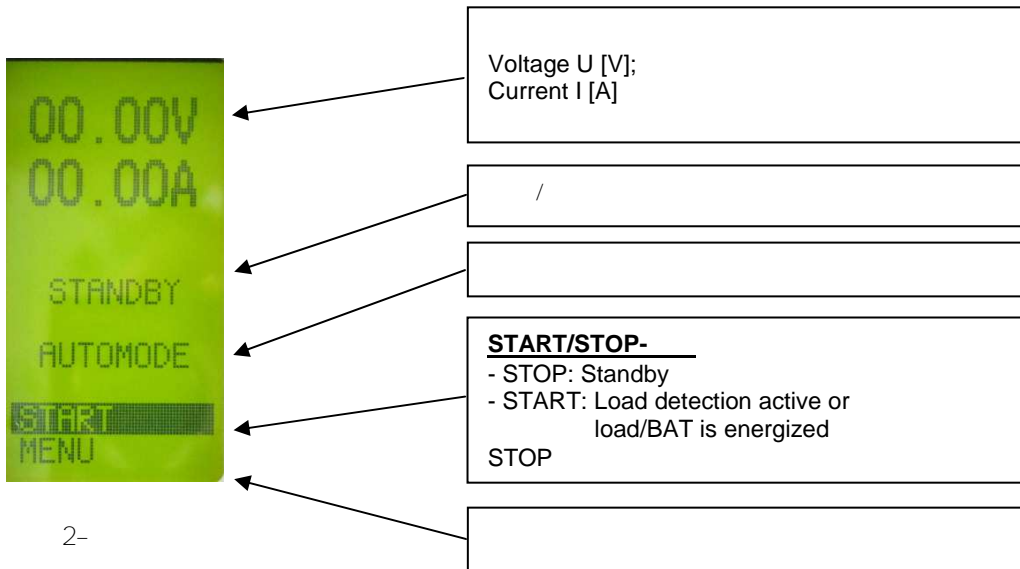
/ ENTER

/ ENTER

AUTOMODE, SUPPLYMODE CHARGE MODE

" STOP"

6.3



2-

- START / STOP

- " START" DBL Standby ENTER START AUTO, SUPPLY or

CHARGE MODE

- " " /

- " MENÜ" " ENTER" " "

Pi n

6.4

" MENU"

3

Pi n

" ENTER"

" ENTER"



1 -

"

DI SPLAY"

6. 5. 6

Pi n

6.5

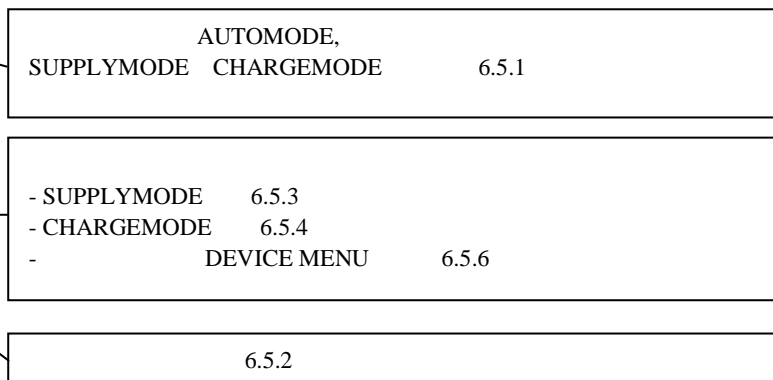
" MENU"

6. 3

"

"

4



4

6.5.1

ENTER " "

AUTOMODE	
SUPPLYMODE	" SUPPLYMODE "
CHARGEMODE	CHARGEMODE

6.5.2

" LANGUAGE " " ENTER " "

LANGUAGE " " ENTER "

German, English, Spanish, French Italian

6.5.3 SUPPLY-MENU



5- SUPPLY MENU

		/
U in [V] U [V]		[2- 17] V DBL800- 14 20V
I _{max} in [A] I _{max} [A]		[0 ... I _{max}] A [0-I _{max}] A

[1] _____ [U] :

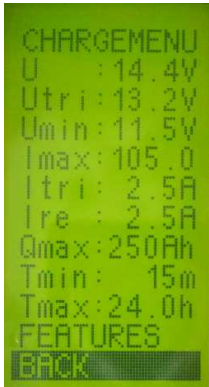
6.5.6 " SAFETY "

[2] _____ [I_{max}]

I_{max}

I_{max}

6.5.4 CHARGE MENU



6

		/
U_{in} [V]		[2-17] V DBL 800- 14 20V
$U_{tri in}$ [V]		[$U_{min} \dots U$] V [$U_{min} \dots U$] V
$U_{min in}$ [V]		[5 ... U_{tri}] V [5- U_{tri}] V [1]
$I_{max in}$ [A]		[($I_{tri} + I_{re}$) ... I_{max}] A I_{tri} I_{re} I_{max} -
$I_{tri in}$ [A]		[1- 20] A DBL
$I_{re in}$ [A]		[[0.5-30] A Itri DBL
$Q_{max in}$ [Ah]		[0- 6000] Ah
T_{min} [min]		[0 ... 240]
$T_{max in}$ [h]		[0 ... 255]
FEATURES		6. 5. 5

6.5.5 CHARGE MENU / Features



7 Features

BFL: ON/OFF	, Battery full "	BFL Tmi n , TRI "
$I_{bfl\ in}$ [A]	BFL	BFL I_{bfl} (9) , BFL LED : I_{bfl} , BFL I_{bfl} , I_{bfl}
BFL- LOCK ON/OFF	BFL- T_{bfl}	BFL- I_{bfl} T_{bfl} BFL-
$T_{bfl\ in}$ [s]		[1 ... 60] sec .
SHORT CELL DETECT ON/OFF		8 -

6.5.6 DEVICE MENU



8

STORAGE	OFF	
	CYCLICAL	5
PARAMETER	Standard	DBL
	User	, User " " " 1 " * "
MAN. START	AUTOSTART	,
	MAN. START	" START" (6.3)
AUTOSTOP	AUTOSTOP	Q_{max} T_{max}
	MAN. STOP	- Q_{max} / T_{max} STOP [2]

SAVETY	U _{max}	[15.5 / 17 ^(*)] V; : [3] !
	VP	15.5V: OVP- 15.5V 17.0V ^(*) : OVP- 15.5V (*) : DBL800-14 Max. 20 V.
	U _{srt}	[0 ... 13.9] V; : [4] !
	LIMITING PULSING	(U _{srt}), DBL : LIMITING [5] / PULSING [6]
	T _{del}	1 ... 60 : /
CABLE	R _{in} [Ω] 0 ... 0.250 Ohm	()
	START (automatic cable- kompensation)	[7] , " " STOP" (" ENTER")
DISPLAY	SLEEP-MODE ACTIVE / OFF	1 DBL ACTIVE LED
	SIGNAL (0-9)	LED1-3 , 9
	KEY LOCK ON / OFF	/ pin
	CODE 0000 ... 9999	pin
VERSION		()

[5] SAFETY LIMITING- /



U_{srt}

[6] SAFETY PULSING- /



U_{srt}

60

/

DBL

60

/

[7] CABLE - -



STOP

/

DEVI CEMENU CABLE

" ENTER"

30

, R: " "

ENTER" /

- 0

- DBL U_{srt}

R_{cable} I_{max} $U_{srt-dynamic} > U_{srt}$

7. / /

	/	/
Ah- LI M T	Ah	h % A 20
READY		START " " / MAN. START AUTOSTART 6. 5. 6
DI S CHARGE	U_{min}	U_{min} 6. 5. 4
CONSERVATI ON		
EXT. VOLTAGE	SUPPLY- /CHARGE MODE DBL 1V	1. . 2. 6. 3 " STOP"
EXT. STOP	" Remote- OFF"	GND Pin25 " Remote- OFF"
CABLE COMP.		6. 5. 6

CONTACT (flashing)	DBL	/
Short Circuit		
CHARGE		
MAX. TIME		/
RECHARGE	DBL $(I_{tri} + I_{re})$	
NTC ERRORNTC		
RELAYS VOLTAGE		
START		6.5.6
OVERTEMPERED	DBL	/

9. /LED

0-9

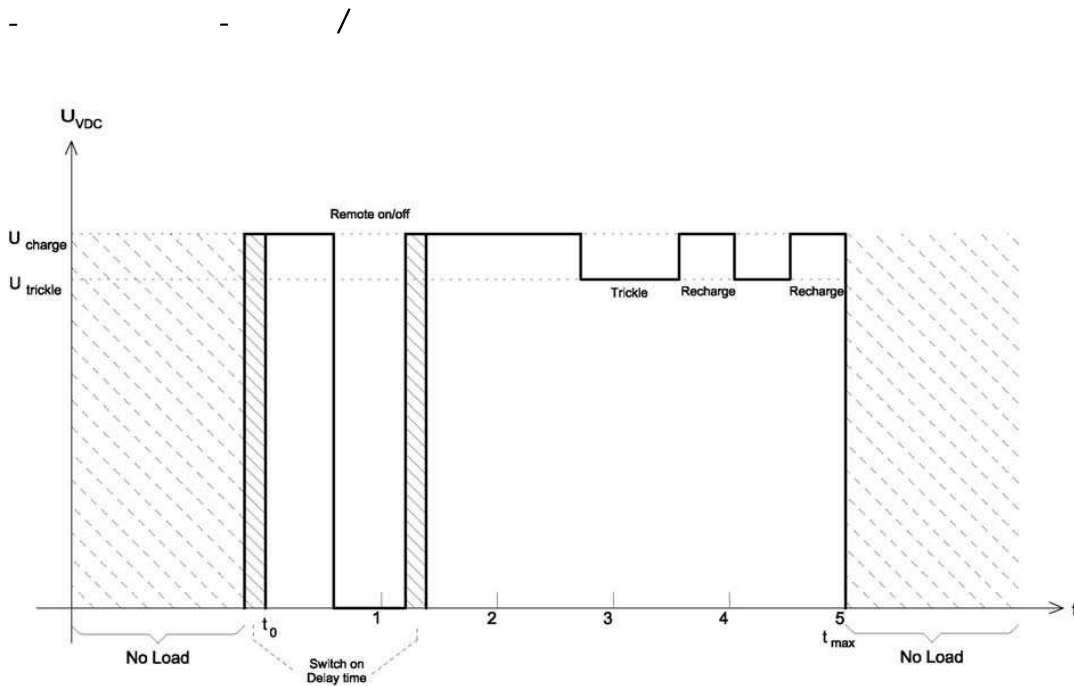
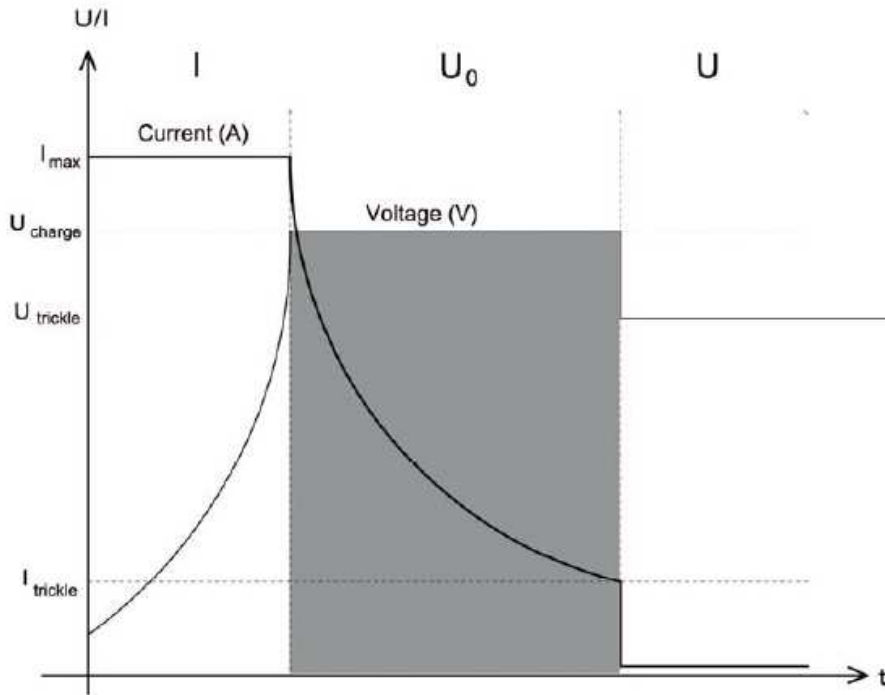
Indication	SIGNAL '0' 0		SIGNAL '1' 1		SIGNAL '2' 2	
	CHARGEMODE	SUPPLYMODE	CHARGEMODE	SUPPLYMODE	CHARGEMODE	SUPPLYMODE
Green (permanently on)	TRICKLE / BFL	Supply	TRICKLE / BFL	---	TRICKLE / BFL	Supply
Green (blink)	/BFL	---	/BFL	---	/BFL	---
Yellow (permanently on)	Charge / Recharge	---	Charge / Recharge	Supply	Charge / Recharge	---
Yellow (blink)	Load Detect active ('Contact' blink) / Application Error		Load Detect active ('Contact' blink)		Load Detect active ('Contact' blink)	
Red (permanently on)	NTC Device Error (Fan, NTC etc.)		Application Error		Application Error	
Red (blink)	---	NTC	Device Error (Fan, NTC etc.)	NTC	Device Error (Fan, NTC etc.)	NTC
Off	Ext. OFF / Standby		Ext. OFF / Standby		Ext. OFF / Standby	

Indication	SIGNAL '3' (V1.28 and later) 3 1.28V		SIGNAL '4' (V1.30 and later) 4 1.30V		SIGNAL '5' (V1.30 and later) 5 1.30V	
	CHARGEMODE	SUPPLYMODE	CHARGEMODE	SUPPLYMODE	CHARGEMODE	SUPPLYMODE
Green (permanently on)	TRICKLE / BFL	Supply	TRICKLE / BFL	Supply	TRICKLE / BFL	Supply
Green (blink)	/BFL	---	/BFL	---	/BFL	---
Yellow (permanently on)	Charge / Recharge	---	Charge / Recharge	---	Charge / Recharge	---
Yellow (blink)	Load Detect active ('Contact' blink)		---		---	
Red (permanently on)	(*) Application Error		Device Error (Fan, NTC etc.) / Application Error	NTC	Application Error	
Red (blink)	Device Error (Fan, NTC etc.) / (*) BAT deep discharged		NTC	---	Device Error (Fan, NTC etc.)	
Off	NTC / * BAT Ext. OFF / Standby		Ext. OFF / Standby / Load Detect active ('Contact' blink)		Ext. OFF / Standby / Load Detect active ('Contact' blink)	

Indication	SIGNAL '6' (V1.35 and later) (Command Mode)		SIGNAL '7' (V1.37 and later)		SIGNAL '8' (V1.37 and later)	
	CHARGEMODE	SUPPLYMODE	CHARGEMODE	SUPPLYMODE	CHARGEMODE	SUPPLYMODE
Green (permanently on)	User defined (via Command)		TRICKLE / BFL	Supply	TRICKLE / BFL: (*) Q-T-max- State = 2 or 4 [U _{out} =Tri]	Supply
Green (blink)	---	---	/BFL	---	/BFL * Q- /T = 2 4[U _{out} =Tri]	---
Yellow (permanently on)	User defined (via Command)		Charge / Recharge	---	Charge / Recharge	---
Yellow (blink)	---	---	/	---	Load Detect active ('Contact' blink)	
Red (permanently on)	User defined (via Command)		Ext. OFF / Standby / Load Detect active ('Contact' blink)		(*) Application Error	
Red (blink)	---	---	Device (Fan, NTC etc.) / Application Error (e.g. Battery)		Device Error (Fan, NTC etc.)	
Off	Standard / User defined (via Command)		Device OFF (Mains Supply OFF)		NTC Ext. OFF / Standby	

Indication	SIGNAL '9' (V1.41.205 and later) 9 1.41.205V		Status		Status	
	CHARGEMODE	SUPPLYMODE	CHARGEMODE	SUPPLYMODE	CHARGEMODE	SUPPLYMODE
Green (permanently on)	TRICKLE / BFL	/BFL	---	---	---	---
Green (blink)	---	---	---	---	---	---
Yellow (permanently on)	Charge / Recharge	Supply	---	---	---	---
Yellow (blink)	Load Detect active ('Contact' blink)		---	---	---	---
Red (permanently on)	Device Error (Fan, NTC etc.)		---	---	---	---
Red (blink)	NTC Application Error		---	---	---	---
Off	Ext. OFF / Standby		---	---	---	---

10.



11.

-
-
-
-

12. /

Fehler! Hyperlink-Referenz ungültig.

/

13.

Deutronic

14.

()

86 8 8011

: +86- 0755- 2307 3107

: +86- 0755- 2307 3103

: info@deutronic-cn.com

<http://www.deutronic-cn.com>

D-IPS[®] und DEUTRONIC[®]

Doc- Nr. 33565